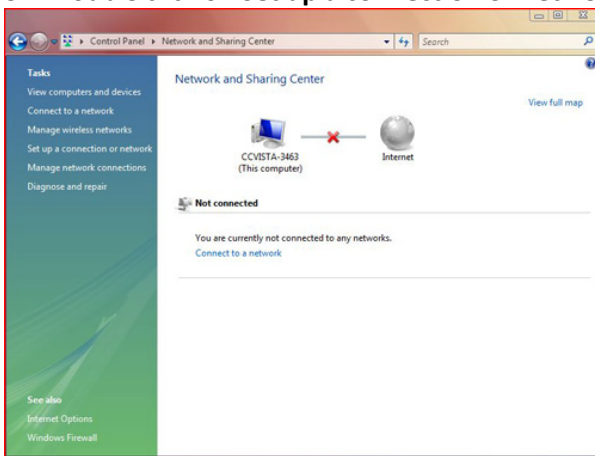


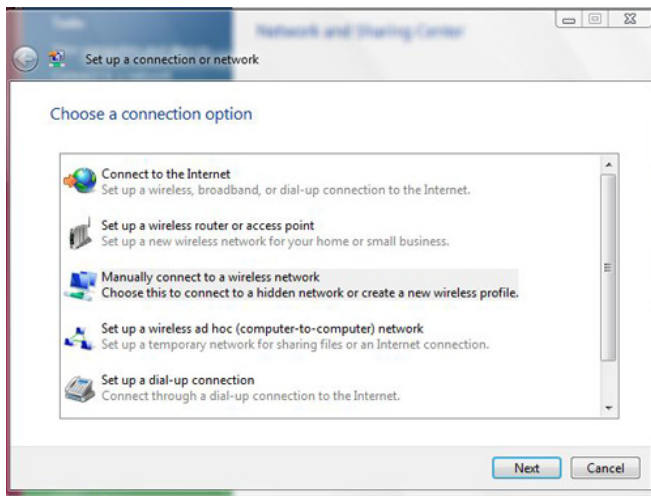
CONFIGURING WIRELESS ACCESS - CAMPUS-AIR -VISTA

PLEASE NOTE: THESE INSTRUCTIONS ARE PROVIDED AS A GUIDELINE ONLY TO ASSIST YOU CONFIGURING WIRELESS. IT STAFF ARE NOT PERMITTED TO WORK ON PRIVATELY OWNED LAPTOPS.

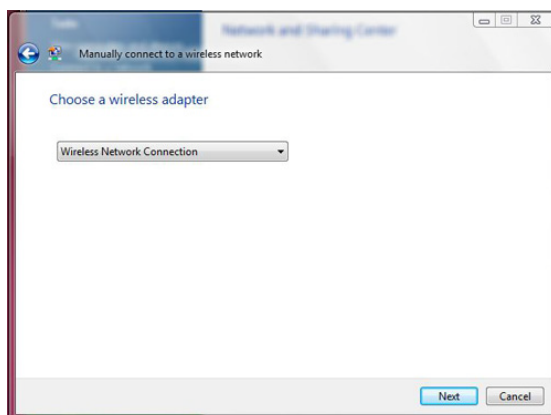
1. From the **Start Menu**, select **Control Panel** or, if using *Vista Classic*, select **Settings** from the **Start** menu and then **Control Panel**.
2. Open the **Network and Sharing Center**.
3. Double click on **Set up a connection or network** in the left column.



4. Click on **Manually Connect to a Wireless Network** to select it and then click the **Next** button.



5. In the **Choose a wireless adapter** window, select **Wireless Network Connection** and click the **Next** button.



6. Enter the following in the **Enter information for the wireless network you want to add** window:

Network Name: **CAMPUS-AIR**

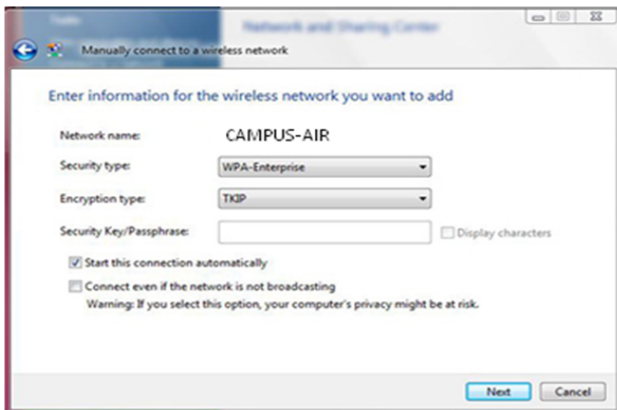
Security Type: **WPA-Enterprise**

Encryption type: **TKIP**

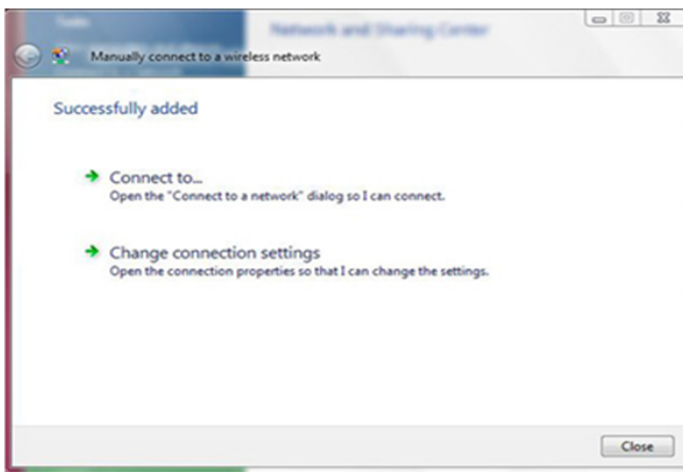
Leave the **Security Key/Passphrase** box blank.

Check the box to the left of **Start this connection automatically**.

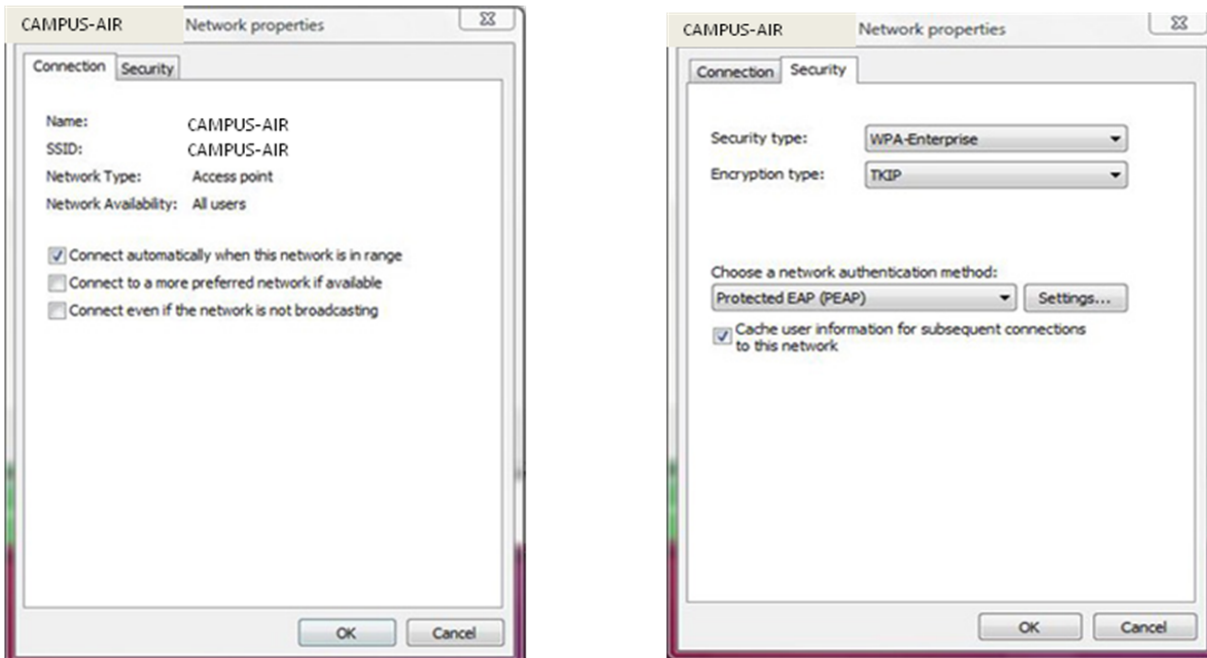
Leave the box to the left of **Connect even if the network is not broadcasting** unchecked and click the **Next** button.



7. In the **Manually connect to a wireless network** window, click on **Change Connection Settings**.



8. In the **CAMPUS-AIR Wireless Network properties** window, select the **Connection** tab at the top. Check the box to the left of **Connect automatically when this network is in range**. The other two boxes should be unchecked.



9. Click on the **Security** tab to configure the following:

Security type: **WPA-Enterprise**

Encryption type: **TKIP**

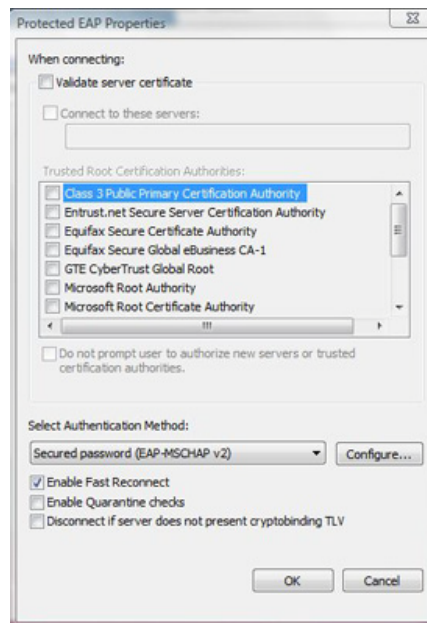
Check the box to the left of **Cache user information for subsequent connections to this network**.

Under **Choose a network authentication method:**, choose **ProtectedEAP (PEAP)** and then click on the **Settings...** button.

10. In the **Protected EAP Properties** window, uncheck **Validate server certificate** under the **When connecting:** heading at the top.

Under the **Select Authentication Method:** heading at the bottom, check the box to the left of **Enable Fast Reconnect**. The other two checkboxes should be unchecked.

Secured password (**EAP-MSCHAP v2**) should be selected from the drop down menu. Click on the **Configure...** button.



11. In the **EAP MSCHAPv2 Properties** window, uncheck the box to the left of **Automatically use my Windows logon name and password (and domain if any)**.

12. Click on the **OK** button at the bottom of this and the previous window to apply the settings.



13. A dialog box from your system tray will appear stating **Additional log on information is required to connect to this network**.
Click on this box.

14. Enter your Student Number, network, password and enter **ONCAMPUS** for the **Logon domain:** and click the **OK** button.

